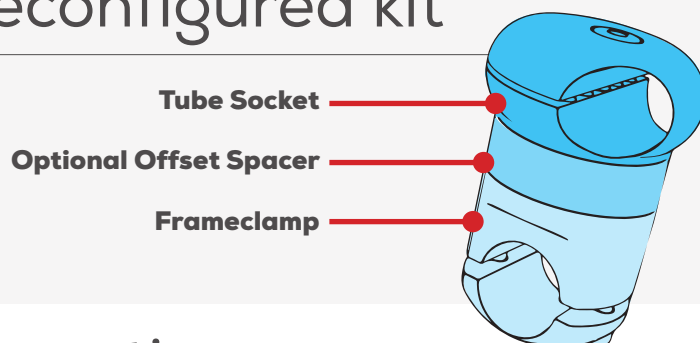


Bases

Combine it yourself or choose a preconfigured kit

Combine different components to build your own bases - composed of a „tube socket“, an optional „offset spacer“ and a „frameclamp“.

Applicable between any geared mating M3D 22mm / 7/8" tube joint, base or swivel unit components.



Preconfigurations



M3D-1-Base

#11.1100

Monty-3D Base-unit: Standard wheelchair-frame-clamp (round, 25 mm / 1") and tube clamp.



L3D16-Base R25

#14.1103

LIGHT-3D-16 Base-unit. Tube connector Ø16 with frame clamp for round frames from 19 to 25mm (3/4" to 1") in diameter. (Please specify exact measurements)

with 10 mm diameter:

L3D10-Base R25

#14.1125



L3D10-Base R10 to R16

Light 3D-10 Base unit which holds 10mm (3/8") L3D tubes. Connector with 10mm diameter with frame clamp for round wheelchair tube of following diameters:

R10: 10 - 10,5mm (7/16")	#14.1111
R11: 11 - 11,5mm (7/16")	#14.1115
R13: 12 - 13mm (1/2")	#14.1110
R14: 14mm (9/16")	#14.1114
R15: 15mm (9/16")	#14.1112
R16: 16mm (5/8")	#14.1113

swivel kits



M3D-1&2-Base-Swivel-Kit

#11.1150

Monty-3D Base & Swivel-joint-unit (simple) to prepare additional wheelchair for existing Monty3D mount. Includes RKL 25 (interchangeable).



M3D-1&2-Base-Swivel-Kit S

#11.1152

Monty-3D Base & Swivel-joint-unit S (backlash-free) to prepare additional wheelchair for existing Monty3D mount. Includes RKL 25 (interchangeable).



M3D-1&2-Base-Swivel-Kit S + Index

#11.1153

Monty-3D Base & Swivel-joint-unit S (backlash-free) to prepare additional wheelchair for existing Monty3D mount. Includes RKL 25 (interchangeable). Incl. Index-clamp.

Bases

for Ergotron



M3D-1-Base Ergo52

#11.1101

MONTY-3D Base unit to mount onto the Ergotron stand column 51mm (2").

for headrests



L3D10-Base E16

#14.1116

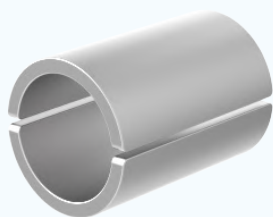
LIGHT-3D-10 Base-unit with frame clamp for rectangular elements from 10 to 16 mm (3/8" to 5/8") wide, holds 10mm (3/8") L3D tubes.



Frame Clamps



Standard wheelchair frameclamp. Fits to many round frames with optional sleeves.



Sleeves

Sleeves to support different diameter wheelchair frame tubing, to apply in RKL25

- Sleeves 25→19mm #01.2519
- Sleeves 25→20mm #01.2520
- Sleeves 25→21mm #01.2521
- Sleeves 25→22mm #01.2522
- Sleeves 25→23mm #01.2523

M3D-RKL

Monty 3D frame clamp, for round frames with following diameters

M3D-RKL-25 25mm #11.1125

M3D-RKL-26 26mm #11.1126

M3D-RKL-28 28mm #11.1128

M3D-RKL-29 29mm #11.1129

M3D-RKL-30 30mm #11.1130

M3D-RKL-32 32mm #11.1132

M3D-RKL-34 34mm #11.1134

M3D-RKL-35 35mm #11.1135

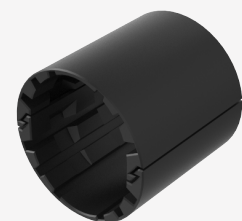
M3D-RKL-36 36mm #11.1136

M3D-RKL-38 38mm #11.1138

M3D-RKL-40 40mm #11.1140

M3D-RKL-42 42mm #11.1142

M3D-RKL-45 45mm #11.1145



Adapter-Sleeve Sunrise Medical

#01.3633

Adapter sleeve to mount #11.1136 M3D-RKL36 at Sunrise Medical wheelchairs with oval frame tubes 33x26,5mm. e.g. Zippie Zone.

Bases

for rectangular frames



M3D-RKL-E30

#11.1065

Frame-clamp for rectangular wheelchair frame elements up to 30mm (1 3/16") thick.



M3D-RKL-E30-70

#11.1060

Frame clamp for rectangular wheelchair frame elements from 30mm to 70mm (1 3/16" to 2 3/4") thick.

semi-open clamp



M3D-RKL-T 16 to M3D-RKL-T 30

Monty-3D Semi-open Frame clamp for tubes with following diameters. Apply when frame tube is not fully accessible, e.g. by overlying seat.

16 mm	#11.1416
19 mm	#11.1419
20 mm	#11.1420
21 mm	#11.1421
22 mm	#11.1422
23 mm	#11.1423
24 mm	#11.1424
25 mm	#11.1425
26 mm	#11.1426
27 mm	#11.1427
28 mm	#11.1428
29 mm	#11.1429
30 mm	#11.1430

for T-nut rails



M3D-Permobil UniTrack

#11.1068

Monty-3D frame adapter for Permobil UniTrack rail / double T-Nut system.



M3D-Item P5

#11.1072

Monty-3D Frame adapter for wheelchairs with Item profil 5 railing. (Suitable for some power wheelchair from „SKS Rehab“)



M3D-T-Nut 16/6,5

#11.1069

Monty-3D T-Nut frame adapter for C-Profile railing max. 16x6.5mm (15/16"x1/4"). (Suitable for power wheelchair from „Quantum“ or „Invacare“)



M3D-T-Nut 23/7

#11.1066

Monty-3D T-Nut frame adapter for C-Profile railing max. 23x7mm (15/16"x1/4"). (Suitable for power wheelchair from „ETAC“ Balder)



M3D-T-Nut 10,5x4

#11.1077

Monty-3D T-Nut frame adapter for C-Profile railing max. 10,5x4mm. (Suitable for „Quickie“ power wheelchair from „SunriseMedical“)

Bases

with threaded holes



M3D-RKL-M8-Mini

#11.1075

Monty-3D Special frame clamp with M8 screws for mounting under the crash bracket of the wheelchairs with Ø8mm threaded holes.



M3D-RKL-M8

#11.1070

Monty-3D Special clamp with M8 thread for wheelchairs with Ø8mm threaded holes.



M3D-RKL-M6

#11.1073

Monty-3D Special frame clamp with M6 thread for wheelchairs with Ø6mm threaded holes or M6 thread.

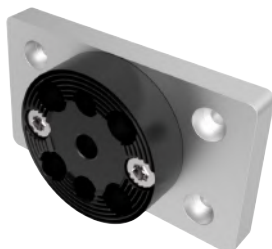
for special brands



M3D-RAD-Per Uni

#11.1062

Universal M3D-Permobil frame-adapter for the following Permobil chairs & seats: Hexior, Canto, Corpus, Corpus Jr, Vertical, Stander, KB, Lowrider, Chairman HD, Street, Miniflex, Koala, Playman, Robo



M3D-SKL-51 2K

#11.1061

Frame clamp for Ergotron column 51mm (2").

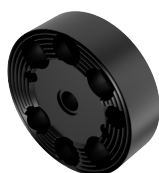


M3D-RKL-Kimba Neo

#11.1071

Monty-3D Frame clamp for oval tube special for the „Kimba Neo“ stroller from „OttoBock“.

on flat surface

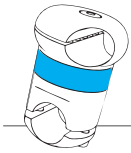


M3D-1-Adapter Ring

#11.1074

Monty-3D base mounting adapter to bolt to any flat surface. Combine with Base Special or Swivel Special to build a full unit.

Bases



Offset Spacer



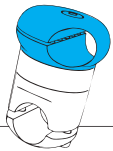
**M3D
Offset Spacer 25**
#11.1525

Monty-3D Universal Offset Spacer 25mm (1") to be applied between any mating M3D 22mm / 7/8" tube joint, base or swivel unit components.



**M3D
Offset Spacer 38**
#11.1538

Monty-3D Universal Offset Spacer 38mm (1½") to be applied between any mating M3D 22mm / 7/8" tube joint, base or swivel unit components.



Tube Sockets



for double tube:
**M3D-1-Base Special
Double Tube**
#11.1105

M3D-1-Base Special
#11.1102

Mount-side half of Monty 3D Base unit - without frame adapter. Combine with any frameclamp or -adapter to build an individual Base Unit.



for double tube:
**M3D-Base Special
Rotation Lock HD**
#11.1081

M3D-Base Special Rotation Lock
#11.1080

Monty-3D Rotation Lock element for Base unit to hinder a mount from sagging when carrying heavy loads. Especially advised for left-side mounting.



L3D10-Base Special
#14.1119

LIGHT-3D-10 Base-unit special. Mount-side half of L3D-10 Base unit - without frame adapter. Combine with any frameclamp to build individual Base for 10mm / 3/8" tubes.



with Quickshift option:
**L3D16-Base
Special QS**
#14.1155

L3D16-Base Special
#14.1101

LIGHT-3D-16 Base-unit special. Mount-side half of L3D-16 Base unit - without frame adapter. Combine with any frameclamp to build individual Base for 16mm / 3/4" tubes.

Bases

swivel halves



M3D-1&2-Swivel-Joint-S Special
#11.1222

Mount-side half of Swivel-unit S - without frame adapter. Combine with any frameclamp or -adapter to build individual backlash-free Swivel-unit S, attaching directly to wheelchair.



M3D-1&2-Swivel-Joint-S Special + Index
#11.1223

Mount-side half of Swivel-unit S (no frame clamp). Combine with frameclamp to build individual backlash-free Swivel-unit S, attaching directly to wheelchair. Includes Indexclamp.



L3D-Swivel-Unit S special
#14.1221

Mount-side half of LIGHT 3D swivel unit with pins, lever and indexing slot clamp (without 2nd tube connector). Combine with any frame clamp to mount directly to the wheelchair.



M3D-1&2-RotLock Swivel-Joint S Special
#11.1082

Mount-side half of heavy duty Swivel-unit S, w/o frame adapter. Add frameclamp to build individual Swivel-unit S, attaching directly to wheelchair. Anti-sagging element included.

Super Clamps



M3D Base SK
#12.1000

Versatile SuperClamp with tube connector for Ø22mm (7/8") tubes, with Quick Shift levers. Mounts onto boards or other elements between 10 and 55mm thickness.



L3D16-Base SK
#14.1117

LIGHT-3D-16 Base unit, Super-clamp with fixed vertical fitting for 16mm / 3/4" L3D tube, to mount to boards or other angular & round structures sized 13 - 55mm.



L3D16-Base SK Pin
#14.1118

LIGHT-3D-16 Base unit. Super-clamp with Ø16 Pin to connect further L3D mount components. Suitable for boards or other angular & round structures sized 13 - 55mm.

Bases



L3D16-Base SK Connect 16

#14.1170

LIGHT-3D-16 Base unit. Superclamp with Ø16 Pin and 16/16 joint with screw, to mount L3D 16 (3/4") tubes to structures sized 13 - 55mm. 360° positioning freedom.



L3D16-Base SK Connect 16 QS

#14.1171

LIGHT-3D-16 QS Base unit. Superclamp with Ø16 Pin and 16/16 joint with lever to mount L3D 16 (3/4") tubes to structures sized 13 - 55mm. 360° positioning freedom.



L3D10-Base SK Connect 10

#14.1172

LIGHT-3D-10 Base unit. Superclamp with Ø16 Pin & 16/10 joint with screw to clamp a 10mm / 3/8" L3D tube to boards or other angular & round structures sized 13 - 55mm.



L3D10-Base SK Connect 10 QS

#14.1173

LIGHT-3D-10 QuickShift Base unit. Superclamp with Ø16 Pin & 16/10 joint with lever to clamp a 10mm / 3/8" L3D tube to boards or other structures sized 13 - 55mm.